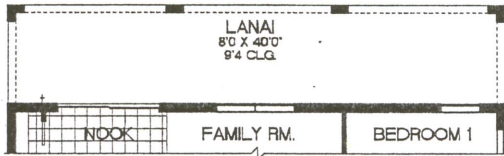
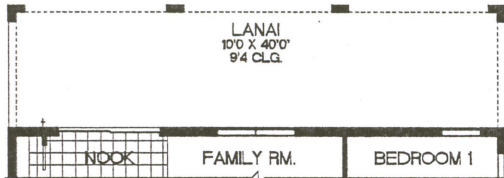


QUEEN PALM

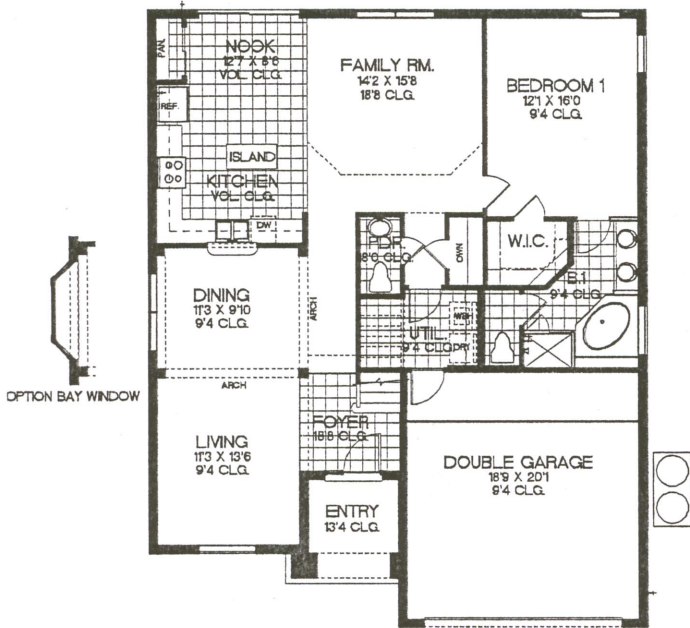
2826 SQ. FT.
5 BEDROOMS, 4 1/2 BATHS, 2 CARGARAGE



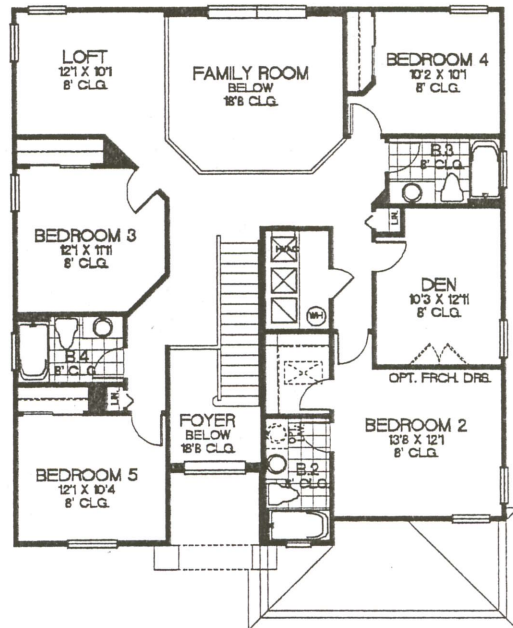
LANAI OPTION #1



LANAI OPTION #2



FIRST FLOOR



SECOND FLOOR OPTION A

PLAN # 2826

TABULATION	
UPPER LIVING	1,401
LOWER LIVING	1,426
GARAGE	410
ENTRY	61
LANAI	0
TOTAL UNDER ROOF	3,298

M.P.R. 10/29/07